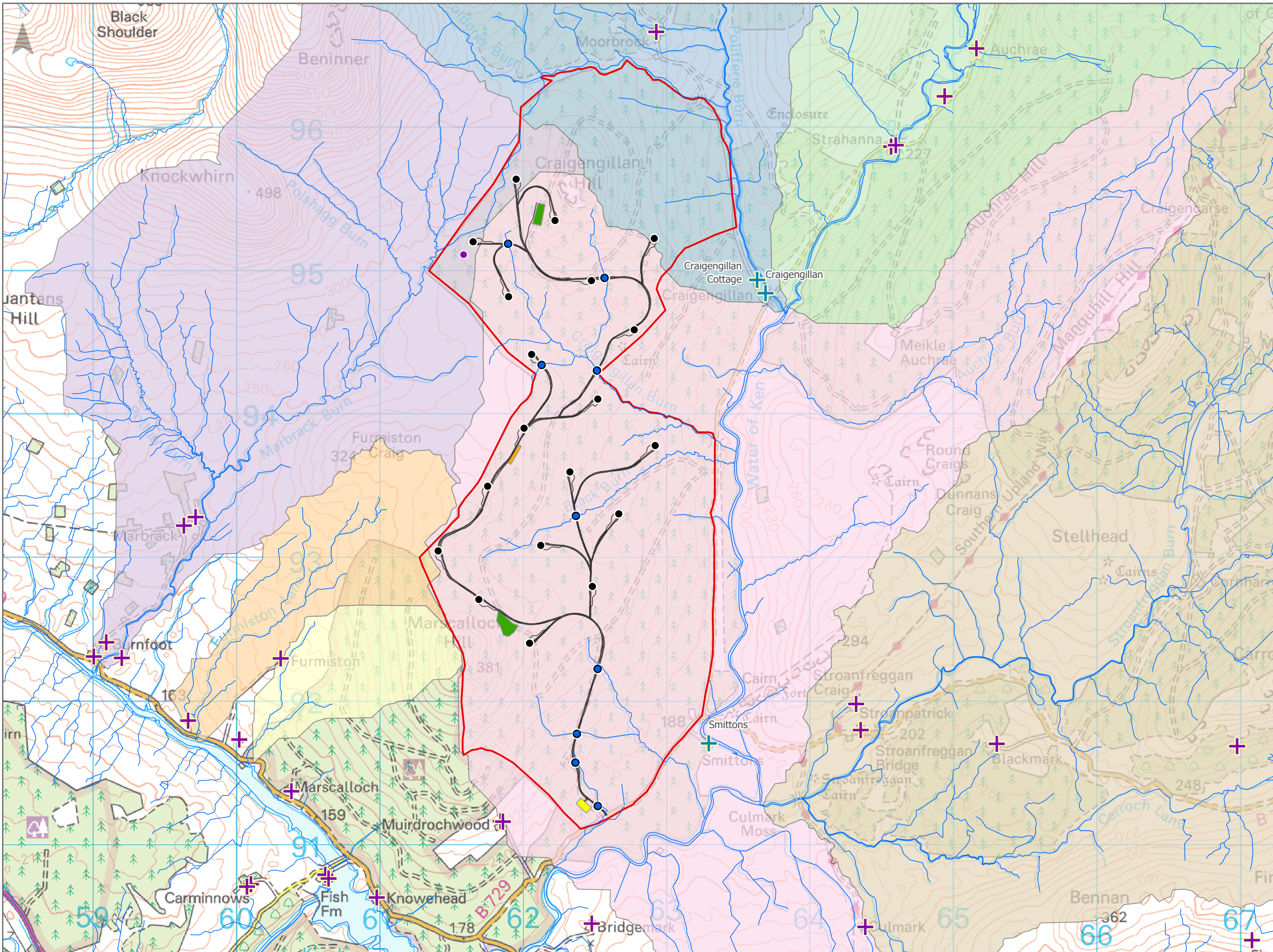


Figure 13.2: Hydrological Catchments



**Legend:**

- Core Study Area
- Turbine Location
- Met Mast Location
- Watercourse Crossing
- + PWS within catchment of infrastructure
- + PWS outwith catchment of infrastructure
- Tracks and Hardstandings
- Substation
- Construction Compound
- Borrow Pit Search Areas

**Catchments**

- Poliferrie Burn
- Water of Ken (upstream of development)
- Marbrack Burn
- Furniston Lane
- Marscalloch Hill
- Stroanfreggan Burn
- Water of Ken

---

**Title:** Hydrological Catchments

**Project:** Shepherds' Rig Wind Farm

**Source:** © Crown copyright and database rights 2018 Ordnance Survey 0100031673

**Client:** Infinergy

<b>Drawn by:</b> RE	<b>Checked:</b> SC
<b>Date:</b> 19/11/2018	<b>Figure:</b> 13.2
<b>Scale:</b>	<b>Revision No:</b> 1

INFINERGY